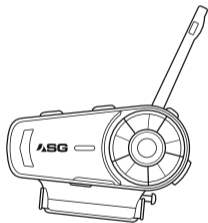


**ASG**<sup>TM</sup>  
**SG5**  
HELMET BLUETOOTH INTERCOM



## USER MANUAL

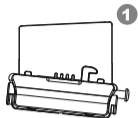
Thank you for purchasing SG5. Wish you amazing rides ahead.  
Note: For the best experiences, please read the user manual before use.

## CONTENTS

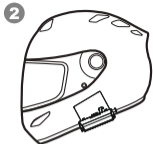


## 1. Installation

1



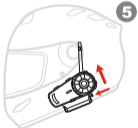
Take the base of the headset



Fix the base in the suitable position with the help of mounting clip



Slide the headset through the grooves, until the base locks with the headset.



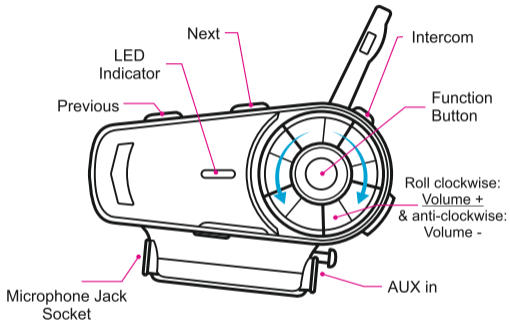
Press clip in the base to release the lock, then slide the headset up to detach from the helmet.

Note: For the best results, mount the speakers closest to the ears and microphone close to the mouth.

## 2. Outlook / Function

2

### 2.1 Outlook



## 2.2 Function

### Power On/Off:

Long press (3 Seconds) INTERCOM & FUNCTION buttons at the same time.

Note: Before first use, please recharge until the Red LED turns off (Battery Full)

### Managing Calls:

Answer Incoming Call: Short press FUNCTION button once.

Hangup Ongoing Call: Short press FUNCTION button once.

Refuse/Reject Incoming Call: Long press (3 Seconds) FUNCTION button.

Redial: Short press the function button twice to redial the last dialed number.

Tips: Switch on the 'Name Calling' from your phone settings. This will help you know Who's calling you.

### Managing Music:

Play / Pause: Short press PREVIOUS button twice

Next / Previous track: Short press NEXT or PREVIOUS button to shift to next or previous track.

Note: Incoming of call / Redialing / Voice Command will pause your music if lasts longer than 15 seconds.

### Intercom:

Switch On / Off: Short press INTERCOM button to switch on when standby or switch off after use.

### FM Radio:

Switch On: Short press NEXT button Twice / Switch Off: Long press NEXT button (2 Seconds)

Next / Previous FM Station: When FM Radio is on, short press NEXT or PREVIOUS button to move to next or previous FM Radio station.

### Voice Command:

When connected with the phone, short press FUNCTION button once and wait for the beep.

Note: With voice command we means 'Siri' or 'Google Now' depending on the OS of your phone.

Functioning of this completely depends on the working of your voice command feature.

Tip: Explore the various voice commands that can be useful while traveling.

### Know the power status:

When in standby, short press PREVIOUS & NEXT button together.

Here's what you can expect: Power over 90% / Power over 50% / Power lower than 50% / Power lower than 10% - Please recharge immediately.

### Format device:

Format pairing memory: When in standby, press FUNCTION & PREVIOUS button together. After a prompt the LED light will flash blue & red when successfully pairing memory is erased.

Tip: This is also a solution if your device is either hanging-up or misbehaving.

Request: This headset is equipped with many useful and entertaining features, we request you to please use this headset responsibly. Ensuring your own safety & others out there.

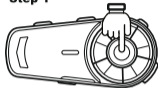
3

## 3. Device Pairing:

### 3.1 Bluetooth Devices:

#### 3.1.1 Pairing Mode:

##### Step 1



When device is on:  
Long press FUNCTION button

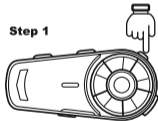
##### Step 2



LED will start flashing Red & Blue 'Quickly'  
& voice will prompt saying Pairing.

#### 3.1.2 Search Mode:

##### Step 1



When device is on:  
Long press INTERCOM button

##### Step 2



LED will start flashing Red & Blue 'Slowly'  
(Means device is in search mode)

4

### 3.2 Pairing with Mobile:

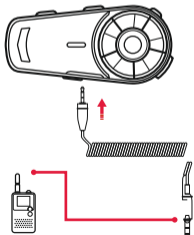
#### For the first time:

1. Switch On the device
2. Follow step 3.1.1
3. Search & select 'ASG SG5' from Bluetooth list
4. When successfully connected, you'll hear a voice prompt 'Device Connected'

#### For daily use:

- Switch on mobile bluetooth first & then your SG5
- If SG5 is switched on first, you'll have to manually connect by selecting from bluetooth list in your mobile.

### 3.3 Connecting via wired connection:



- There is a AUX port provided for additional features. However you'll need a 3.5mm to 2.5mm Jack to connect to any devices.
- Devices like Walkie-Talkie, Mp3 player & even few mobile phones (2nd connection) can support this feature.

Note: 3.5mm to 2.5mm jack is not included with this product.

### 4. Multiple Device Pairing:

#### 4.1 Operating Scenario 1:

One rider connecting to Cellphone + Bluetooth GPS Device + Bluetooth Instrument Cluster

#### Step 1



At first of all, pair GPS & Cellphone

#### Step 2



Pair SG5 with GPS. When done, switch off Bluetooth in GPS

#### Step 3



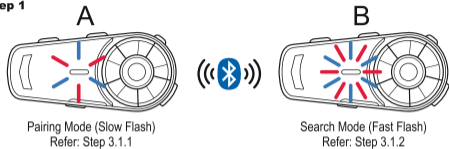
Now, Pair SG5 with Instrument Cluster. Once done switch on bluetooth in GPS

Note: For multiple connections like these, the pairing should be done one by one taking care that all the other bluetooths are switched off to avoid interference. Once paired with all the devices, switch on the bluetooth feature in all devices.

## 4.2 Group Intercom:

Here for example, 4 riders A, B, C & D are pairing their intercom devices.

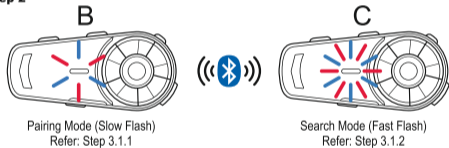
### Step 1



Pairing Mode (Slow Flash)  
Refer: Step 3.1.1

Search Mode (Fast Flash)  
Refer: Step 3.1.2

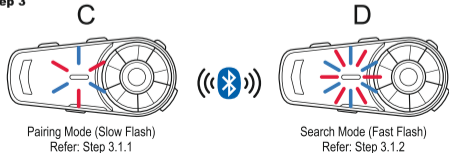
### Step 2



Pairing Mode (Slow Flash)  
Refer: Step 3.1.1

Search Mode (Fast Flash)  
Refer: Step 3.1.2

### Step 3



Pairing Mode (Slow Flash)  
Refer: Step 3.1.1

Search Mode (Fast Flash)  
Refer: Step 3.1.2

## 4.2.1 Intercom pairing:

SG5 being equipped with multiple intercom connections, the number of devices that can be paired are 8 riders.

Here, in the example let's assume that 4 riders named A, B, C & D are pairing:

- STEP 1: Switch on A & B unit.

Put A to Pairing mode (Step:3.1.1) & Put B to Search mode (Step:3.1.2)

Once connected, the Red-Blue flashing lights will turn into blinking blue.

To pair with more devices, press A's intercom button to switch off Intercom function.

- STEP 2: Switch on B & C unit.

Put B to Pairing mode (Step:3.1.1) & Put C to Search mode (Step:3.1.2)

Once connected, the Red-Blue flashing lights will turn into blinking blue.

Now A, B & C are connected.

To pair with more devices, press B's intercom button to switch off Intercom function.

- STEP 3: Switch on C & D unit.

Put C to Pairing mode (Step:3.1.1) & Put D to Search mode (Step:3.1.2)

Once connected, the Red-Blue flashing lights will turn into blinking blue.

Now A, B, C & D are connected. Press Intercom buttons to start talking.

Note:

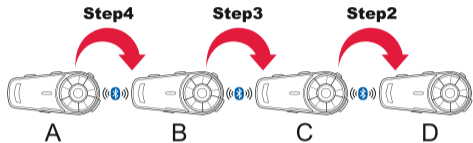
- If you have more devices to pair, please repeat the above instructions.

- In group connection, if a rider get's a call then he will be automatically reconnected after the call ends.

- If a rider is disconnected due to distance or bad signal, then press intercom button to reconnect.

#### 4.2.2 Intercom re-connect:

Re-connecting after switching off of the device.



\*\*The paired devices are saved.

To reconnect:

Step 1: Switch off all 4 units & all Bluetooth devices connected to the Headset

Step 2: Switch on C & D, press D's intercom button to connect to D.

Step 3: Switch on B, press C's intercom button to connect to C & D.

Step 4: Switch on A, press B's intercom button to connect to B, C & D.

Once all the devices are connected, switch on all connected bluetooth devices.

Points to know:

- This device is IP65 certified Water Resistant
  - This device comes with 6 months warranty from the date of purchase.
  - This device can be charged while using.
  - Power bank is preferred over USB charger for charging while using it.
  - In case of parts not working properly, check all plugs are connected firmly
  - When kept on charging a red light will be on and when full it will turn off.
- Never keep the headset for charging for longer than required time.



**STORE.ASG**  
INFO@ASG.STORE